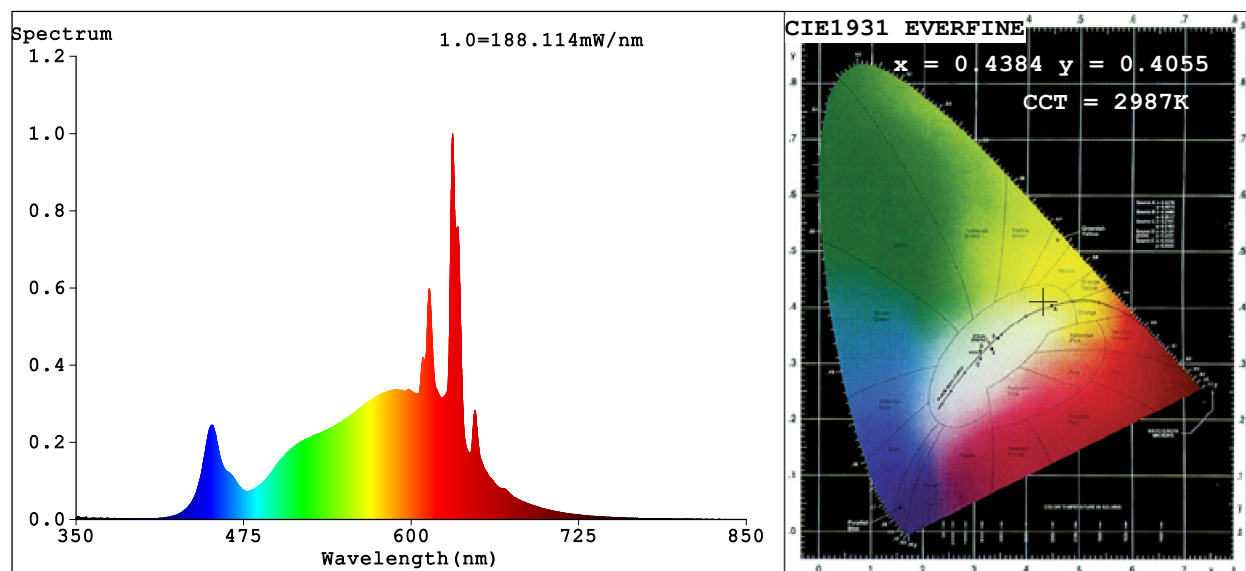


Spectrum Test Report



Color Parameters:

Chromaticity Coordinate: $x=0.4384$ $y=0.4055$ $u'=0.2509$ $v'=0.5222$

CCT=2987K (Duv=0.0004) Dominant WL:Ld =582.8nm Purity=53.3%

Ratio:R=24.4% G=73.0% B=2.6%; Peak WL:Lp=630.9nm FWHM=8.4nm

Render Index:Ra=91.1 CRI=87.4 TM30:Rf=89 Rg=100

R1 =91 R2 =95 R3 =96 R4 =92 R5 =91 R6 =94 R7 =91

R8 =79 R9 =51 R10=86 R11=92 R12=77 R13=92 R14=97 R15=87

Photo Parameters:

Flux = 3781 lm Eff. : 122.84 lm/W Fe = 11.07 W

Electrical parameters:

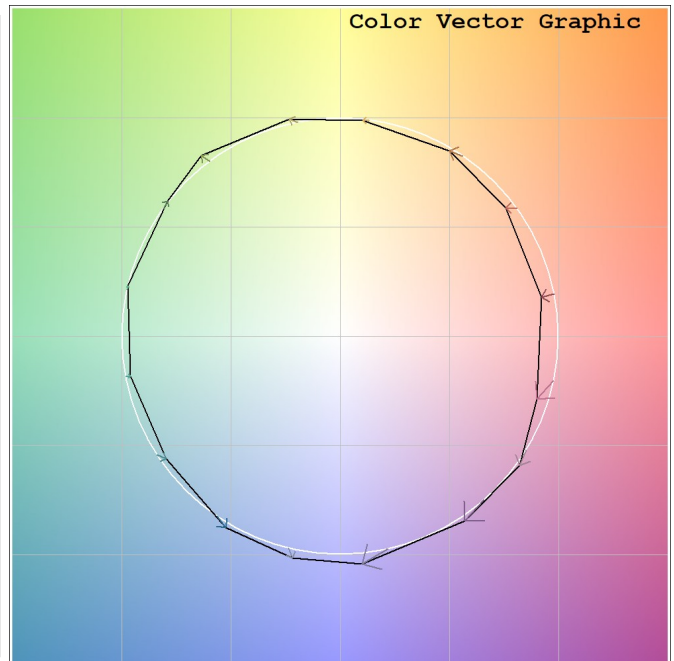
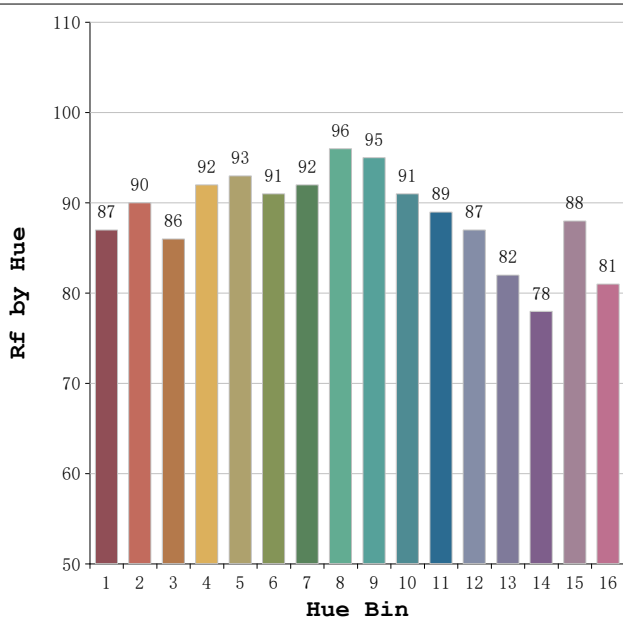
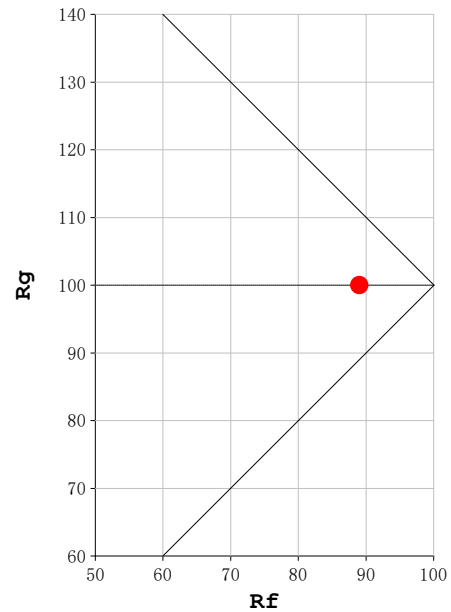
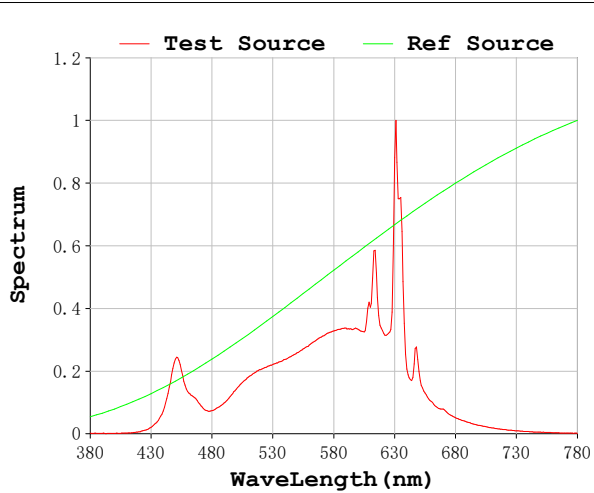
V = 230.05 V I = 0.1391 A P = 30.78 W PF = 0.9618

Status: Integral T = 167 ms Ip = 51184 (78%)

Model:Spotia 30w negro
Tester:Sergio Carneros
Temperature:20Deg
Manufacturer:Luz Negra

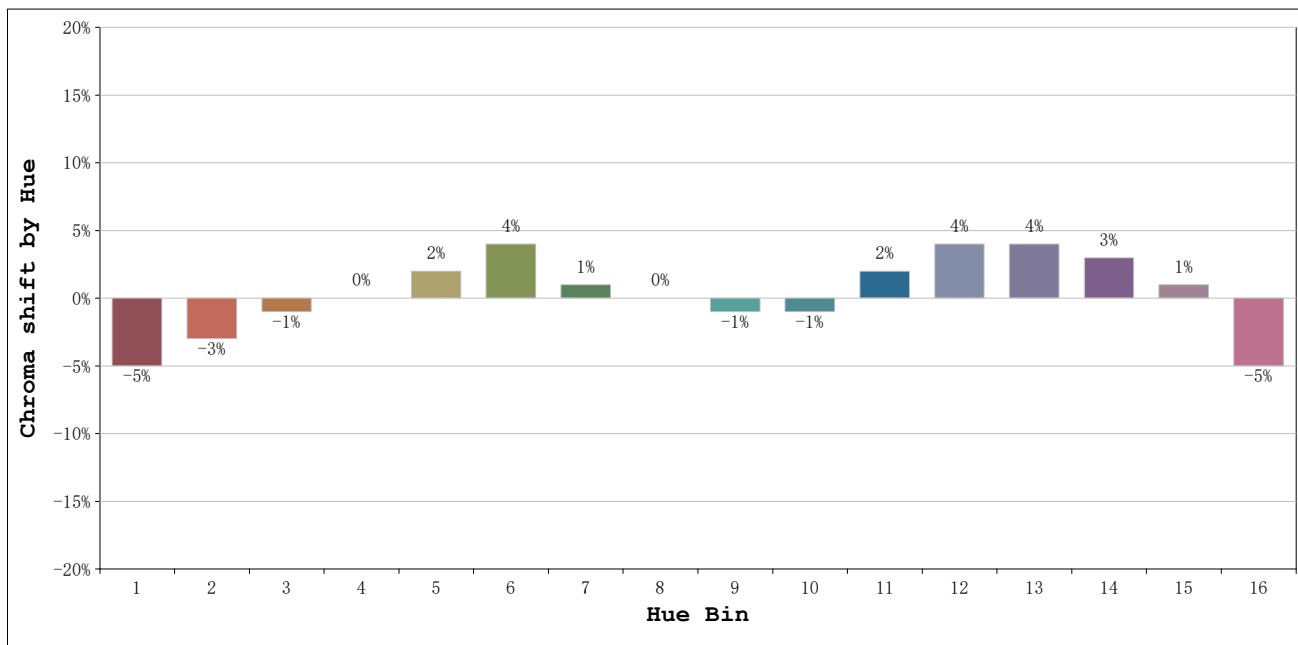
Number:3000k 36°
Date:2026-03-23 10:21:12
Humidity:50%
Remarks:1 unidad

Rf: 89 **CCT: 2987 K** **u': 0.2509**
Rg: 100 **Duv: 0.0004** **v': 0.5222**



Model:Spotia 30w negro
 Tester:Sergio Carneros
 Temperature:20Deg
 Manufacturer:Luz Negra

Number:3000k 36°
 Date:2026-03-23 10:21:12
 Humidity:50%
 Remarks:1 unidad



Hue Bin	Hue Angle	Rf	Graphic shift(%)	
			Chroma	Hue
1	0.0° - 22.5°	87	-5	0
2	22.5° - 45.0°	90	-3	3
3	45.0° - 67.5°	86	-1	6
4	67.5° - 90.0°	92	0	3
5	90.0° - 112.5°	93	2	4
6	112.5° - 135.0°	91	4	2
7	135.0° - 157.5°	92	1	-3
8	157.5° - 180.0°	96	0	-1
9	180.0° - 202.5°	95	-1	0
10	202.5° - 225.0°	91	-1	4
11	225.0° - 247.5°	89	2	6
12	247.5° - 270.0°	87	4	2
13	270.0° - 292.5°	82	4	-12
14	292.5° - 315.0°	78	3	-12
15	315.0° - 337.5°	88	1	-7
16	337.5° - 360.0°	81	-5	-9

Model:Spotia 30w negro
 Tester:Sergio Carneros
 Temperature:20Deg
 Manufacturer:Luz Negra

Number:3000k 36°
 Date:2026-03-23 10:21:12
 Humidity:50%
 Remarks:1 unidad